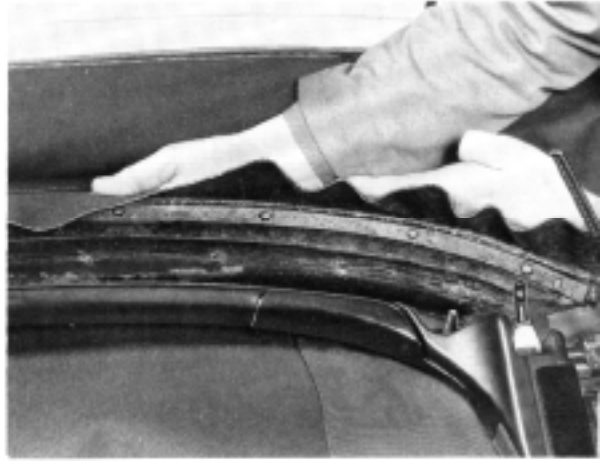


16 Glue the side flaps to the no. 1 cross-member.



17 Glue the top cover to the no. 1 cross-member. Fold the fabric carefully over the crossmember to ensure a minimum of creasing.



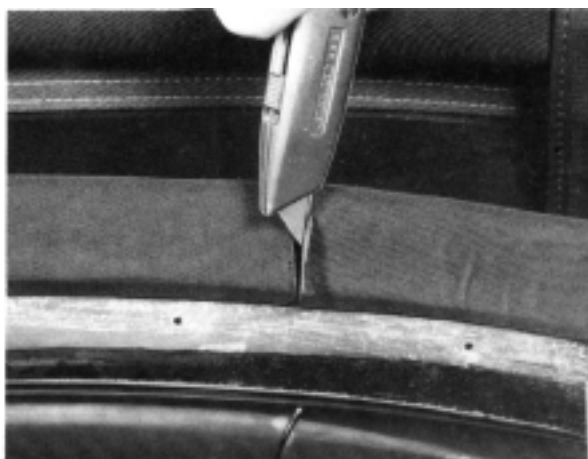
18 Trim the fabric along the edge of the no. 1 crossmember.



19 Cut away the top layer of fabric between the seams.



20 Cut through any creases along the length and smooth the fabric down.

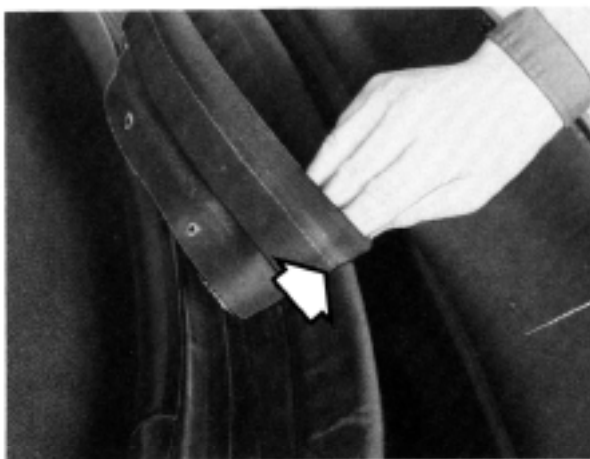


21 Cut off the surplus seam at the edge.



22 Place the welt cord in position on the no. 1 crossmember.

The fore-and-aft position is determined by aligning the seam with the front edge of the crossmember. Also ensure that the midpoint of the cord is equidistant from either side.



23 Open up the bottom flap of the welt cord and staple it to the plastic strip, starting in the middle and working out towards the ends. Use the long staples, part no. 69 34 285.

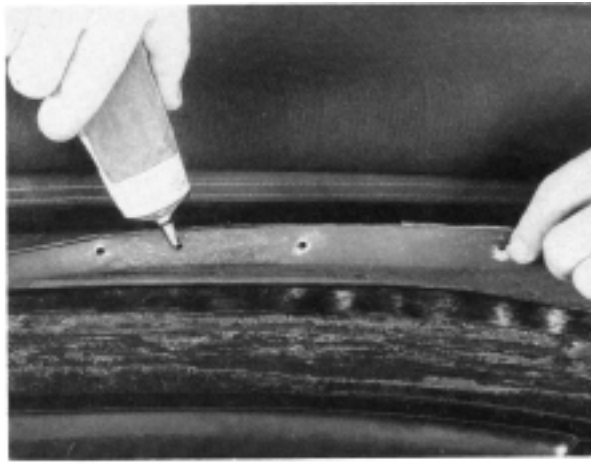


---

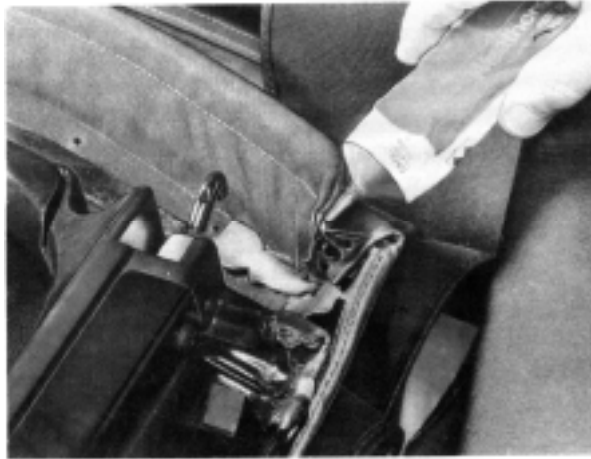
#### Note

The long staples, part no. 69 34285, are used for stapling two or more layers of fabric. The short staples, part no. 69 35 712, are used when only one layer of fabric needs to be stapled.

24 Glue the top fold of the welt cord onto the crossmember.



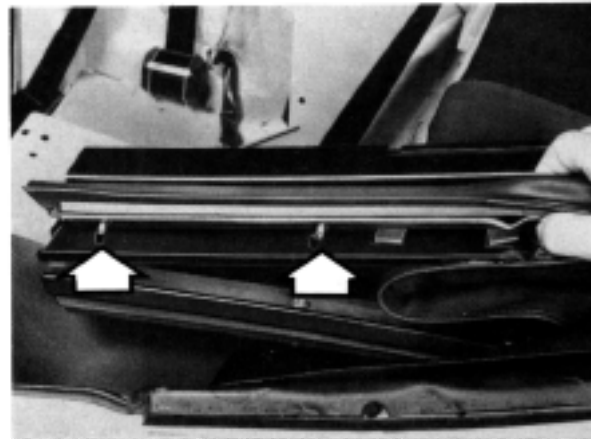
25 Glue the welt cord ends.



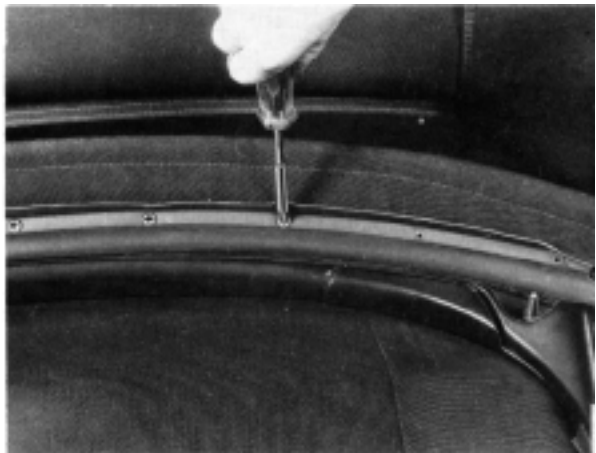
26 Apply a bead of adhesive along the edge of the welt cord.



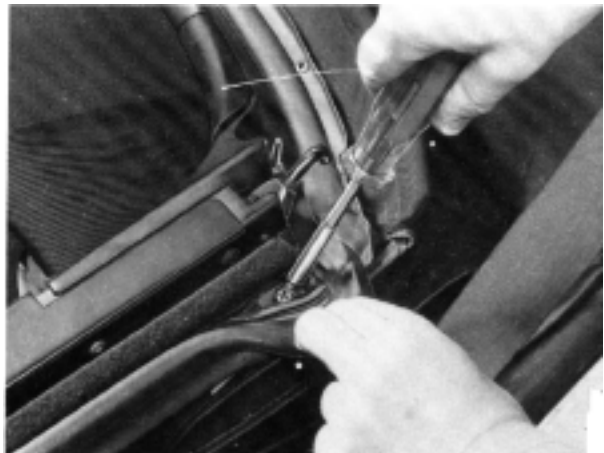
27 Place the front seal into position and thread the nuts onto the seal-retainer bolts.



28 Fit the screws securing the seal to the no. 1 crossmember.



29 Fit the front screws in the strip retainer.



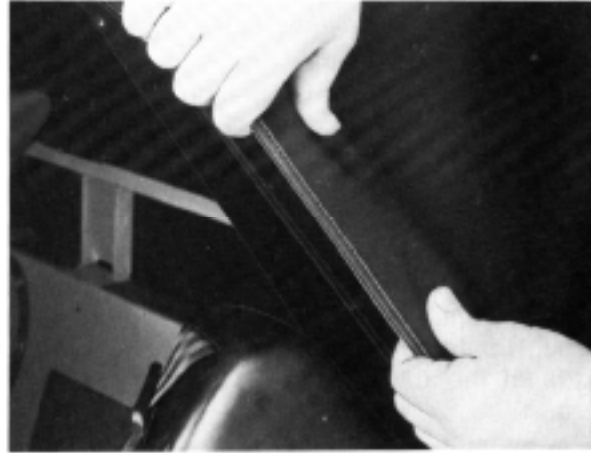
30 Seal the ends of the strip using Sikaflex 255 (30 07 127).



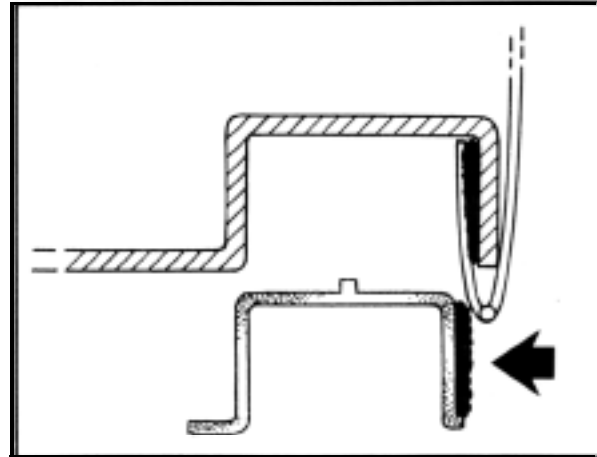
31 Place the spacers, part no. 82 92492 or 82 92 799, as appropriate, in the wind-screen frame. Raise the top and engage the latching hooks but do not close the latching handles.



- 32 Stretch the top fabric by pulling it down over the rails at the back and glue the top to the rails.



- 33 Apply adhesive along the outside edges of the rear seals.



- 34 Place the rear seals in position, tighten the acorn nuts and fit the ties. Use cable ties, part no. (10) 79 71 899.

In order not to leave sharp edges that could damage the fabric, do not cut the ends of the ties but tuck them in instead.

